



# Saltaire

Buzza Street, St Mary's,

TR21 0HX



## Sleeps 2 | Wednesday Change over

- Double Arrangement
- Internet Access
- Convenient location for beaches and Quay

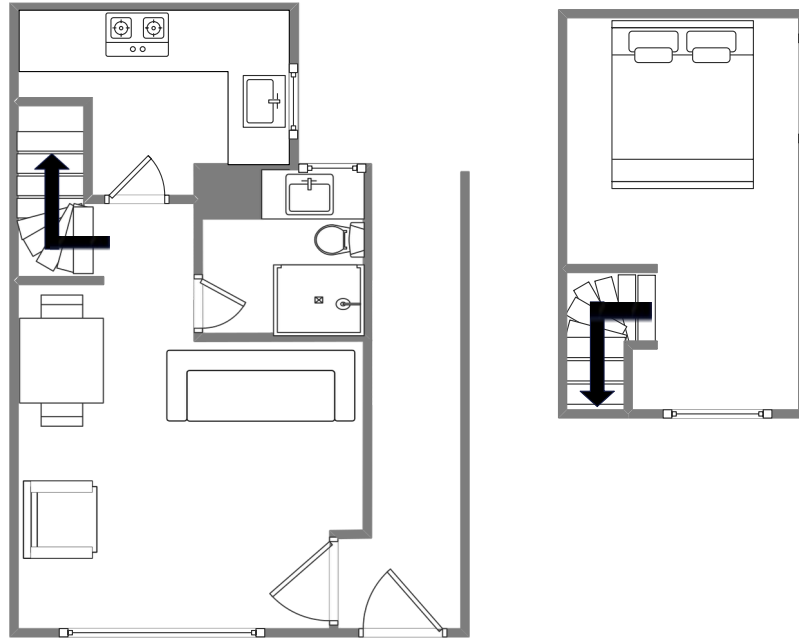
This cozy one bedroom property is just a few steps from Porthcressa Beach in Hugh Town. Wake up to partial ocean views from the light and airy upstairs double bedroom.

The downstairs open plan kitchen/living space is fully equipped for all your needs.

The bathroom with walk-in shower is situated downstairs

All linen, towels and electricity are provided.

# Layout



## Getting to the property

### Map of St Marys



### Directions from the Quay | Walking time: 7-9 minutes

Head towards the entrance to the quay  
Turn left at The Mermaid Inn on to Hugh Street  
Keep to the right side of the road past Hugh Street  
Cafe on to Silver Street.  
Go past Town Hall and Porthcressa Car Park on to

Porthcressa Street.  
at the junction near the end of Porthcressa street turn right.  
There will be blue entrance door by your left.  
Enter this door and entrance to the Saltaire is first door by  
your left.

[What3words///wizards.meant.unlist](https://www.what3words.com/wizards.meant.unlist)

Scilly Self Catering  
Lower Strand  
Isles of Scilly, TR21 0PS

Enquiries@scillyselfcatering.com  
01720 422082  
[www.scillyselfcatering.com](http://www.scillyselfcatering.com)